

Parameters

37 Reportable parameters (whole blood): WBC, Lym(#,%), Mon(#,%), Neu(#,%), Bas(#,%), Eos(#,%), IMG(#,%), RBC, HGB, HCT, MCV, MCH, MCHC, RDW-CV, RDW-SD, NRBC(#,%), PLT, MPV, PDW, PCT, P-LCR, P-LCC, RET(#,%), IRF, HFR, MFR, LFR, IPF, RHE

With 2 histograms, 5 scatter grams, 3 3D stereograms

48 Research parameters (whole blood): HFC(#,%), RBC-O, PLT-O, PLT-I, WBC-O, WBC-D, TNC-D, IME(#,%), H-NR%, L-NR%, NLR, PLR, WBC-N, TNC-N, InR#, InR%, Micro(#,%), Macro(#,%), MRV, PDW-SD, RPI, H-IPF, IPF#, Neu-X, Neu-Y, Neu-Z, Lym-X, Lym-Y, Lym-Z, Mon-X, Mon-Y, Mon-Z, SRBC, LRBC, SMCV, LMCV, MCH(r), HDW, MPC, MPM, HYPER%, HYPO%, FRC(#,%); **With 3 scatter grams**

7 Reportable parameters (body fluid): WBC-BF, RBC-BF, TC-BF#, MN(#,%), PMN(#,%)

11 Research parameters (body fluid): Eos-BF(#,%), Neu-BF(#,%), HF-BF(#,%), RBC-BF*, LY-BF(#,%), MO-BF(#,%)

Body fluid with RBC histogram and DIFF scatter gram

Channel and Principle

DIFF/WNR/RET: Flow Cytometry+Fluorescence Nucleic Acid Staining technology

RBC(PLT): Sheath Impedance

HGB: Colorimetric(The upgrated Cyanide-free reagent)

Throughput

CBC 150T/H, CD 130T/H, CDR 70T/H

Reagents

Diluents(DS, DR), Lyses(LN, LD, LH), Fluorescent dyes(FR, FN, FD)

Sampling mode

Pre-diluent 40 μ L, Whole blood \leq 145 μ L, Body fluid \leq 145 μ L

Sampling device

Auto loader with 50 (10*5 racks) samples storage capacity

Data storage

Up to 1,500,000 sample results with grams

Analysis mode

CBC, CD, CDR, CR, RET, CR/PLT-L, CDR/PLT-L

Linearity

WBC: 0~500 \times 10⁹/L, PLT: 0~5000 \times 10⁹/L

Display

Integrated 10.4-inch touch screen with PC display (23.8-inch color TFT display)

HIS & LIS

Support, with HL7 protocol

Power

AC 220V/110V, 50/60Hz, 900VA

Dimension & Weight

Host: 630mm(L) \times 644mm(W) \times 783mm(H), 90kg

Pressure device: 275mm(L) \times 400mm(W) \times 425mm(H), 20kg

URIT Since 1984
Global Diagnostics Supplier



BH-6580

5-Part-Diff Hematology Analyzer

Throughput up to 150T/H

Flow Cytometry+Nucleic Acid Fluorescence Staining technology

Outperforming '6-Part-Diff' hematology analyzer

44 reportable parameters and 59 research parameters

New PLT-L solution ensure the accuracy of low PLT count



URIT Medical Electronic Co., Ltd.

Head Office
Add.: No. D-07 Information Industry
District, High-tech Zone, Guilin, Guangxi, 541004, P.R. China
Tel: +86-773-2288586 Fax: +86-773-2288560
E-mail: export@urit.com service@urit.com
http://www.urit.com

Shenzhen Office
Add.: Room E.J, 24th Floor, New Baohui Building, Nanhai Road,
Nanshan District, Shenzhen, P.R. China
Tel: +86-755-26413721
Rev. 202303-2(20230327)



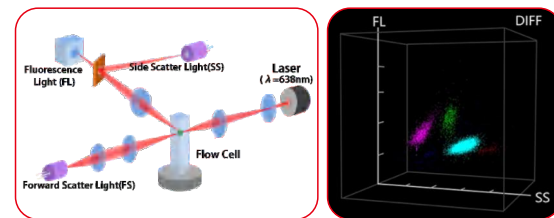
Guilin, China



BH-6580
5-Part-Diff Hematology Analyzer
Speed makes the difference

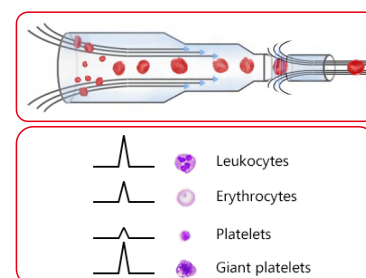
Superior Nucleic Acid Fluorescence Staining Technology

Nucleic acid content vary from different cells, target dyeing cell nucleic acid with fluorescent dyes, and get scattered light information at two angles and fluorescent signals to accurately identify different cells. The abnormal cells can be accurately and quantitatively detected thanks to the high nucleic acid fluorescent signals. It provides important clinical information for early detection of malignant diseases.



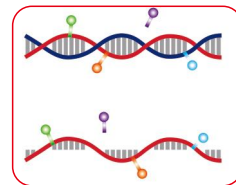
Reliable PLT Results

- **Sheath Impedance(PLT-I)**
Effectively avoiding cell overlap, more accurate PLT results. The wrapped cells passed without touching the ruby aperture, low maintenance rate
- **Fluorescent Nucleic Acid Staining(PLT-O)**
Free from interference of platelet clumps, large platelets, small RBC, fragmented RBCs etc.
- **PLT-L**
Extending counting time to ensure the accuracy of low PLT count samples

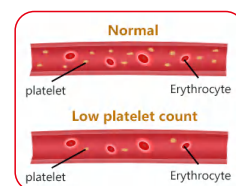
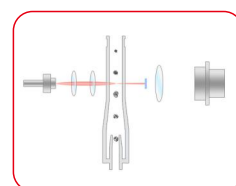


Accurate

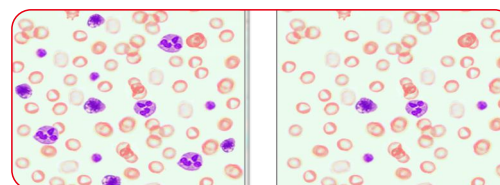
- Targeted nucleic acid fluorescence staining to accurately identify different cells



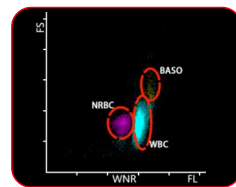
- The combination of PLT-I, PLT-O and PLT-L, accurately report platelets



- Accurate and Automatic detection of low leukocytes count samples



- NRBC obtain in CBC test, avoid WBC counting false positive and decrease re-detection rate



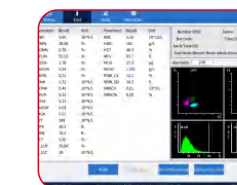
Efficient

- Throughput up to 150S/H
- The CS module support abnormal sample auto rerun & reflex check
- One Click Quality Control
- 360° rotating code scanning

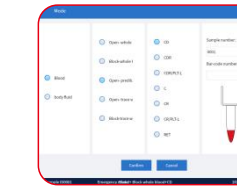


Comprehensive

- Total 44 reportable parameters including whole blood and body fluid parameters



- Total 7 analysis modes for pre-diluent samples
- Various sensitive alarm information

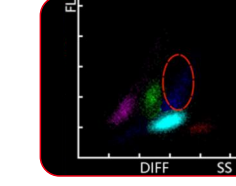


- Compatible with multiple types of sample tubes (Whole blood vacuum tube, capillary blood inner sleeve, sarstedt tube etc.)

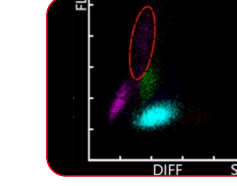


Valuable Parameters

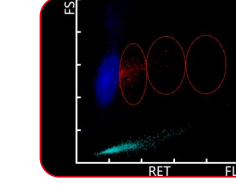
- IMG(#,%) provide valuable help about leukemia or leukemic reaction diagnosis



- HFC(#,%) represent blasts and atypical lymphocytes alarm information



- RET(#,%), IRF, RHE information for better monitoring of anemia



- InR(#,‰) prompting infected by plasmodium, related to malaria.

